

■ TP-FM01

Firelec FMC series interface to CHARM™ I/O Baseplate adapter panel

Description :

The **TP-FM01** adapter panel is used to connect a Firelec FMC series interface to the Emerson CHARM™ I/O baseplate (DeltaV S-series).

The FMC interface is positioned in the guides of the **TP-FM01** then plugged into a 50pts connector and secured by 2 screws.

It ensures electrical connections, guiding and mechanical securing of the interface FMC.

The **TP-FM01** is screwed directly on the CHARM I/O baseplate.



Product options :

Option **VSH** : Conformal coating (Tropicalization)

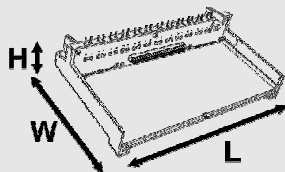
Technical specifications :

Dimensions :

Length : 187 mm

Width : 116 mm

Height : 45 mm



Weight :

170 g (TP-FM01 only)

Temperature range :

Operating : -10°C to 60°C

Storage : -20°C to 60°C

Mounting on the CHARM I/O baseplate :

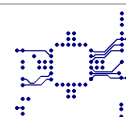
Secured by the 48 screws (4 by channels) of the CHARM I/O Baseplate

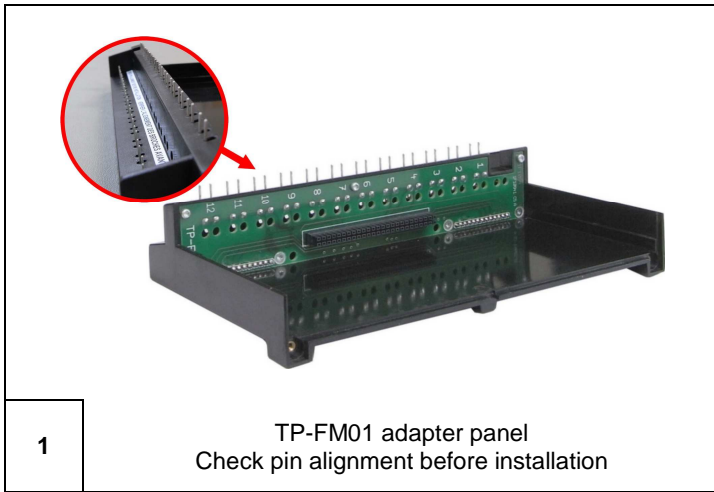
Connection with the Firelec FMC series interface :

By a 50 pts connector. The TP-FM01 + FMC interface assembly is secured by 2 screws

Humidity :

Up to 90% (no condensation)

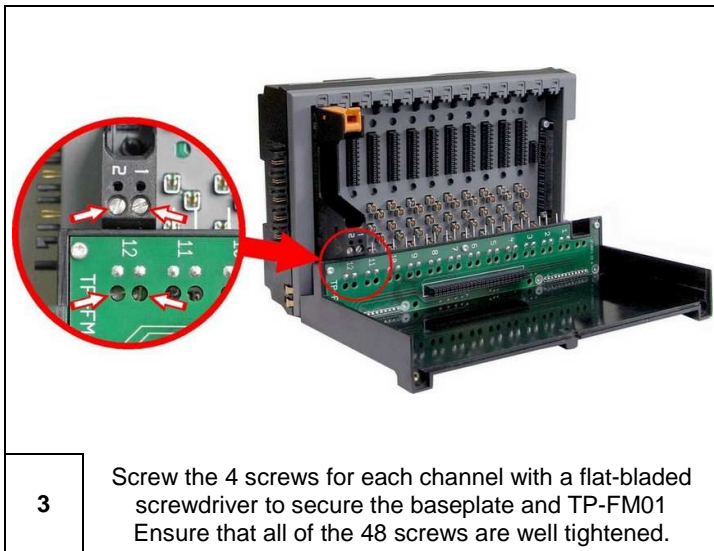




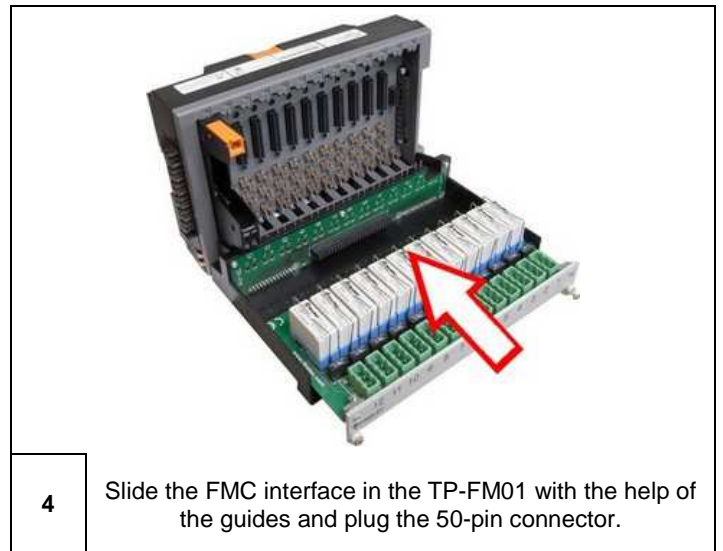
1 TP-FM01 adapter panel
Check pin alignment before installation



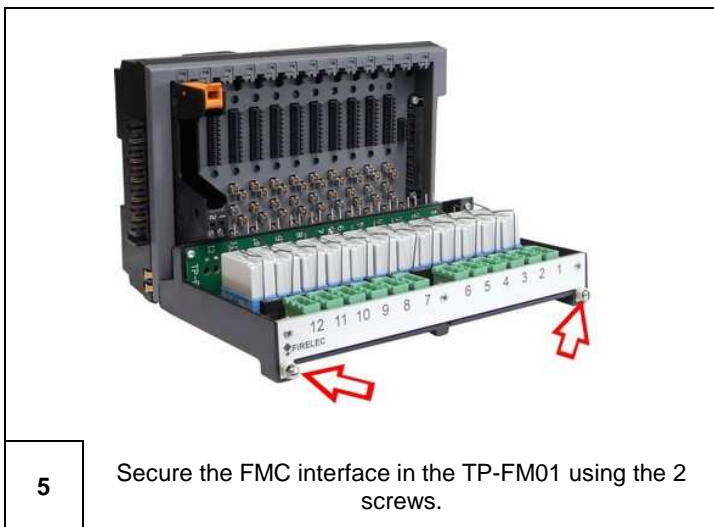
2 Place the CHARM I/O baseplate on the TP-FM01 by placing the pins in the terminals



3 Screw the 4 screws for each channel with a flat-bladed screwdriver to secure the baseplate and TP-FM01. Ensure that all of the 48 screws are well tightened.



4 Slide the FMC interface in the TP-FM01 with the help of the guides and plug the 50-pin connector.



5 Secure the FMC interface in the TP-FM01 using the 2 screws.



6 CHARM I/O baseplate + TP-FM01 + FMC assembly

