

■ FC0202-LFD

1 channel – isolating driver 4-20mA for valve positioner with line fault detection

Description :

The module **FC0202-LFD** receives a 4-20mA signal from a Distributed Control System (DCS), or a Programmable Logic Controller (PLC) and produces an isolated 4-20mA to drive a current pressure converter. It allows the monitoring of the open line all the way, using the Line Fault Monitoring provided by the control line of the DCS or the PLC.

The module permits the transmission of digital communication from the input loop to the output loop.

Using the dedicated connector on the front side, it is easy to communicate from the control room with the smart valve positioner on the field, with a handheld HART communicator.

Product options :

Option **ST** : FC0202-LFD-ST, Screw terminals for the transmitter connection

Option **CCT** : FC0202-LFD-CCT, Cage clamp terminals for the transmitter connection

Option **VSH** : Conformal coating (Tropicalization)

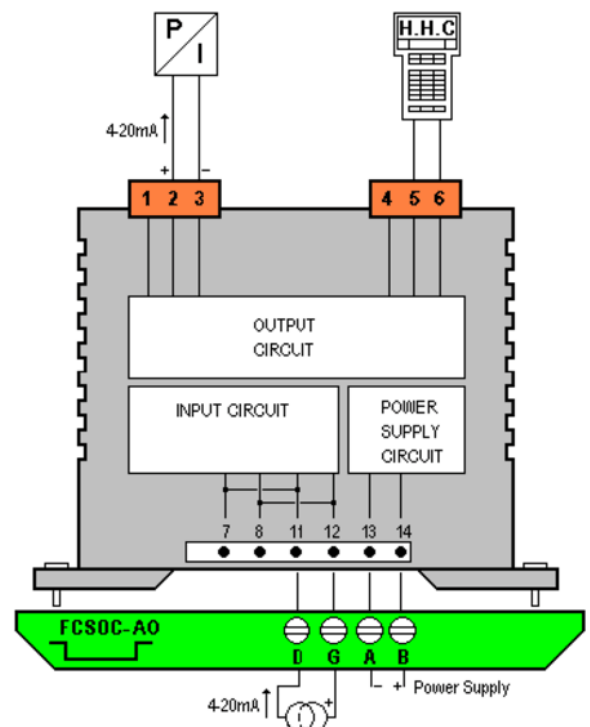


1 channel 4-20 mA for standard or HART valve positioner with open line monitoring

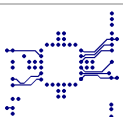
Triple isolation between input, output and power supply

Bi-directional HART communication pass through

DIN rail mounting, on termination panel modulo 8, modulo 16 or individual socket



R10-2009



Technical specifications :

Power Supply

Voltage range:	21Vdc to 32Vdc
Power ON indication:	By green Led on front plate
Consumption (26Vdc):	65 mA with output at 20mA
Replaceable fuse:	100 mA 250V quick action

Input specifications

Protection:	Against over voltage and short circuit
Input impedance for a 4-20mA input and load connected in output loop	About 120 Ω
HART input impedance:	>250 Ω
Input loop 4-20mA with load disconnected in output loop	Open

Output specifications

Current:	4-20mA
Low limit:	2mA at 0mA of input loop
High limit:	30mA +/- 1mA
Max load at P.S.=21 Vdc:	800 Ω at 20mA output

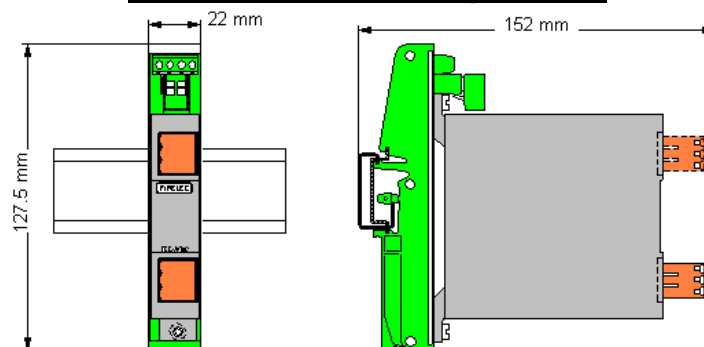
Transfer characteristics

Accuracy at 20°C ambient:	Better than 0,15%
Response time:	90% of the final value within 50ms.
Drift:	0,01%/°C
Isolation Voltage (Input / output / P.S.):	1500Vdc
Common mode rejection at 220v:	DC: without measurable effect / AC (50Hz): 120 dB

Mechanical and environment characteristics

Protection:	IP20
Wiring conductor section:	Option ST: 24 to 12 AWG (0.2 to 2.5 mm ²) Option CCT: 24 to 12 AWG (0.2 to 2.5 mm ²)
Weight:	100g
Size:	L=85mm W=16mm H=120mm with front connector
Operating temperature:	-10°C to 50°C
Storage temperature:	-20°C to 60°C
Relative humidity:	10 to 90% (no condensation)
Mounting:	<u>DIN rail</u> : panel modulo 8 type FC8308-1 or FC8308-2 or individual socket FCSOC-AO <u>Rack 19"</u> : panel modulo 16 type FC5331

Socket for individual mounting on DIN rail



Reference of individual socket:	FCSOC-AO
Power Supply connection:	Screw Terminal B (+) and A (-) AWG 14 to 26 or 0.14 to 1.5mm ²
Fuse protection on power supply:	1A
Protection:	Against over voltage and reverse polarity
Output connection:	Screw terminals G (+) and D (-) AWG 14 to 26 or 0.14 to 1.5mm ²