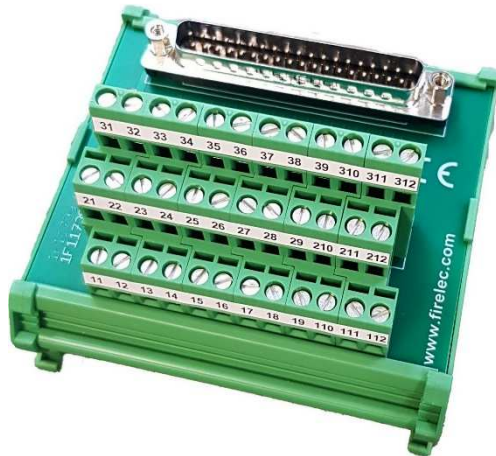
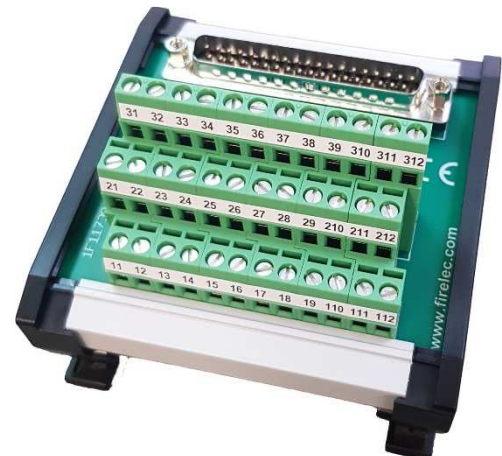


■ INT-AI12

12 channels - Analog Inputs 4-20mA for 2 or 4 wire transmitters and 2 or 3 wire RTDs



INT-AI12-ST



INT-AI12-ET-ST

Description :

The **INT-AI12** allows to connect either 2 or 4 wire 4-20mA transmitters or 2 or 3 wire RTDs to a Distributed Control System (DCS), or a Programmable Logic Controller (PLC).

It is possible to connect up to 12 transmitters/RTD (channel 1 to channel 12) using three rows of terminals labelled by row and channel number.

For the 4-20mA transmitters :

- The terminals of the lower row (1...) are dedicated to the signal common (-) (4W mode).
- The terminals of the middle row (2...) are dedicated to the transmitter power supply (2W mode).
- The terminals of the upper row (3...) are dedicated to the mA (4-20mA) input (2W and 4W mode).

For the RTD's :

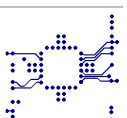
- The terminals of the lower row (1...) are dedicated to the signal common (-) (3W mode)
- The terminals of the middle row (2...) are dedicated to the (+) of the RTD (2W and 3W mode).
- The terminals of the upper row (3...) are dedicated to the signal common (-) (2W and 3W mode).

The connection with the Analog Input card is done using a shielded cable, with a D-SUB 37 pin Female connector at one end and labeled flying wires or a suitable connector matching with the Analog Input card used at the other end. The shield can be connected using an M3 Screw.

The **INT-AI12-ET** interface is a rugged version intended for operation in a higher temperature environment.

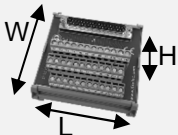
Product options :

- Option **ST** : Screw terminals for the process signals connection
- Option **ST2.5** : Screw terminals with a capacity of 24 to 12AWG (0.2 to 2.5mm²) for the process signals connection
- Option **CCT** : Cage clamp terminals for the process signals connection
- Option **ET** : Product with extended temperature range
- Option **VSH** : Conformal coating (Tropicalization)





Technical specifications :

<u>Dimensions :</u>	<u>INT-AI12</u>	<u>INT-AI12-ET</u>
Length	113 mm	118mm
Width	90 mm	93 mm
Height	71 mm	71 mm
		
<u>Weight :</u>		
	165g	175g
<u>Temperature range :</u>		
Operating	0°C to 50°C	0°C to 80°C
Storage	-10°C to 50°C	-10°C to 80°C
<u>Humidity</u>		
(no condensation)	Up to 90%	Up to 80%
<u>Mounting :</u>		
DIN rail	Asymmetric/symmetric	Symmetric

Max Current :

1A per channel

Max voltage :

50Vdc / Vac

Withstanding voltage rating :

250V Between non connected

Signals (on field terminals)

Conductor cross section :

TB1 : Inputs :

ST : 26 to 14 AWG (0,14 to 1,5mm²)

ST2.5 : 24 to 12 AWG (0,2 to 2,5mm²)

CCT : 24 to 14 AWG (0,2 to 1,5mm²)

Shield connection :

1 x M3 screw

Connection to the DCS or to the PLC :

1 x D-SUB 37 pin male connector with UNC 4-40 female lock.

