

## ■ PIA-2AI-8

### Provox™ 20 series Interface Adapter for migration toward a new system

#### Description:

The Provox Interface Adapter **PIA-2AI-8** allows to easily connect an existing 16-channel Analog Input Provox Termination Panel to two 8-channel Analog Input card.

It is easy to install the **PIA-2AI-8** in the existing I/O card file type CP6701, at the place occupied by the Provox I/O card.

The Provox cable (SUBD37F/SUBD37M) between the termination panel and the Provox I/O card is kept in place, and then plugged to the SUBD37M connector (J1) of the **PIA-2AI-8** unit.

The connection to the new two 8-channel Analog Input cards is done using two shielded cables, with a SUBD25F connector at one end, and labelled flying wires or a suitable connector matching with the new system Analog Input card used at the other end.

The power supply cards of the existing CP6701 card file are no longer necessary. So they can be removed and replaced with a metallic front plate.

#### Technical specifications:

##### **Mounting:**

In an existing CP6701 card file, in place of the existing Provox I/O card.

##### **Dimension:**

Height: 261.8mm, Width: 20mm, Depth: 50mm

##### **Weight:**

About 200g

##### **Temperature range :**

Operating : -10°C to 60°C

Storage : -20°C to 60°C

##### **Relative humidity:**

10 to 90% (no condensation)

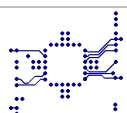
##### **Wiring:**

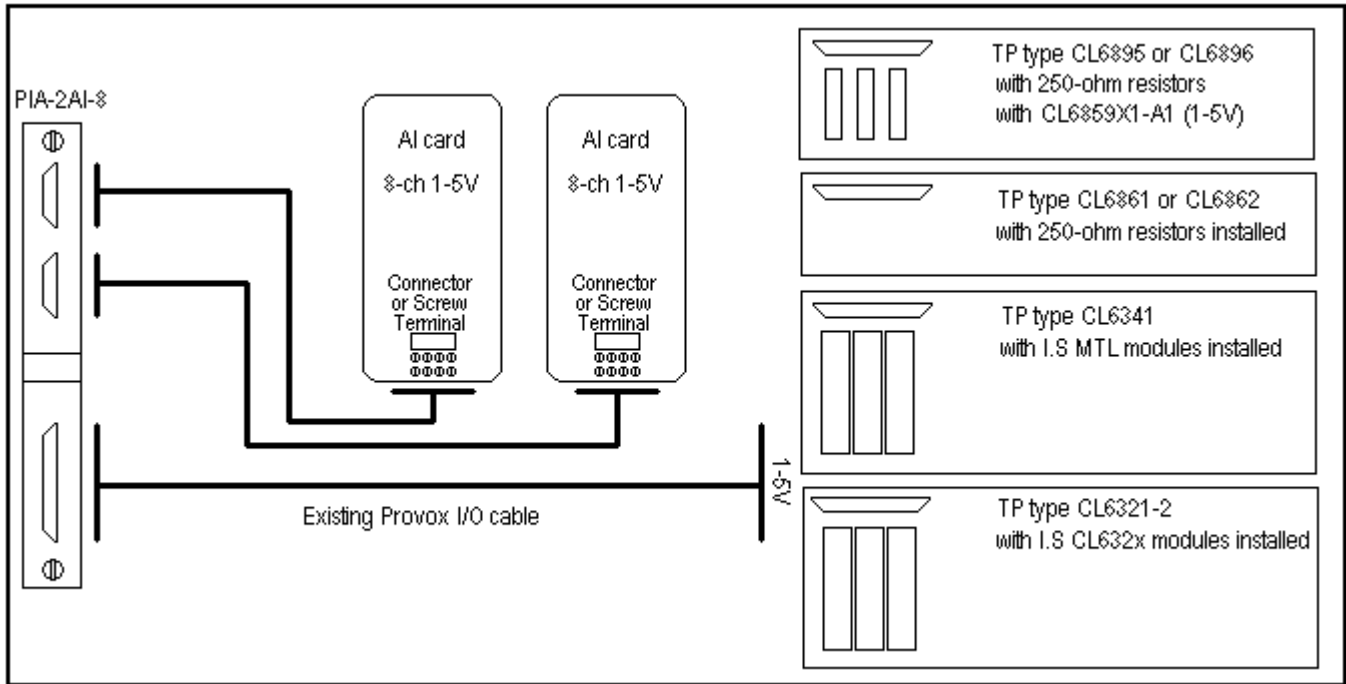
Two SUBD25M connectors (J2 and J3) with UNC 4-40 female lock for the connection to the two 8-channel Analog Input cards.

One SUBD37M connector (J1) with UNC 4-40 female lock for the connection to the existing I/O Provox cable.

##### **Compatible Provox Termination Panel:**

CL6861 or CL6862, CL6895 or CL6896, CL6341, CL6345, and CL6321-2 Termination Panel can be interfaced by the PIA-2AI-8.



**Connection using two 8-channels Analog Input cards:**

**Connection using two 8-channels Analog Input Redundant cards:**
