



TP-FM02-02

CHARM™ I/O Baseplate to D-SUB 37 pin Male adapter

Description :

The **TP-FM02-02** adapter panel is used to connect a FIRELEC interface unit to the Emerson **CHARM™** I/O baseplate (DeltaV™ S-series) using a D-SUB 37 pin male connector.

The **TP-FM02-02** is screwed directly on the terminal blocks of the **CHARM™** I/O baseplate.

The connection to the FIRELEC interface is done using a shielded cable, with a D-SUB 37 pin female connector at one end and labeled flying wires or a suitable connector matching with the FIRELEC interface unit at the other end.

Product options :

Option -1 : **TP-FM02-02-1**, Standard version

Option **VSH** : Conformal coating (Tropicalization)

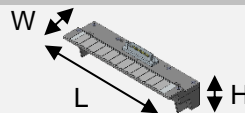
Technical Specifications :

Dimensions :

Length : 187 mm

Width : 43 mm (54 mm with ID label)

Height : 40 mm



Weight :

145 g (165 g with the labelling plate LB-11696-1)

Humidity :

Up to 90% (no condensation)

Temperature range :

Operating : -10°C to 70°C

Storage : -10°C to 70°C

Shield connection :

By two M3 screws

Mounting on the CHARM I/O baseplate :

Secured by the 36 screws of the **CHARM™** I/O Baseplate

(Screw 1, 2 and 4 for each of the 12 channels)

Connection with the FIRELEC interface units :

D-Sub 37 pin male connector with UNC 4-40 female lock

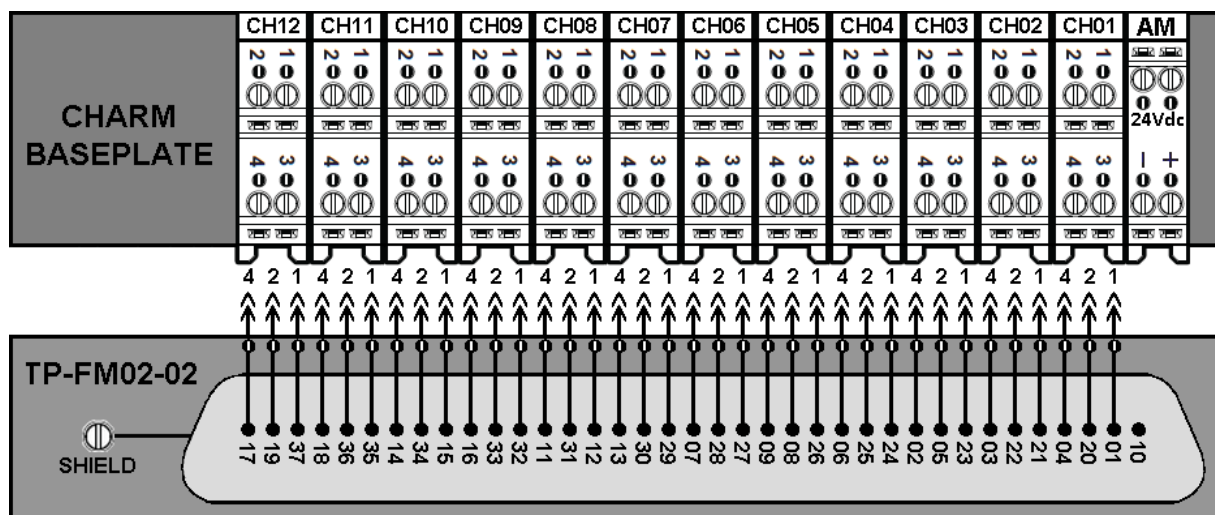


TP-FM02-02-1

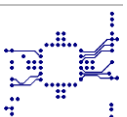


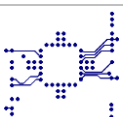
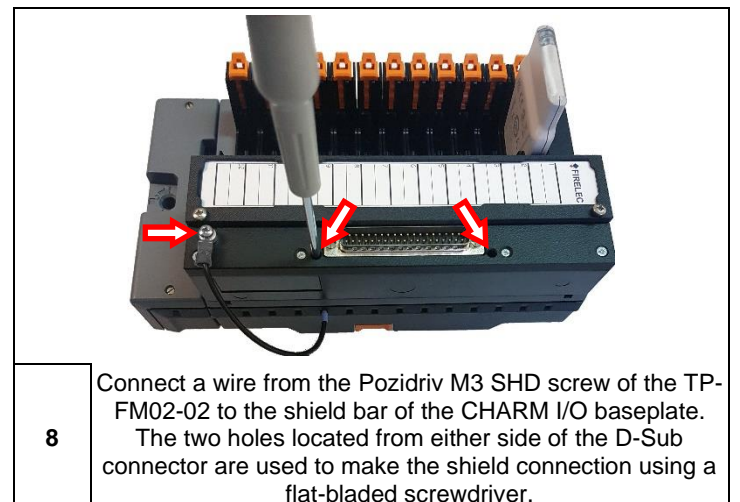
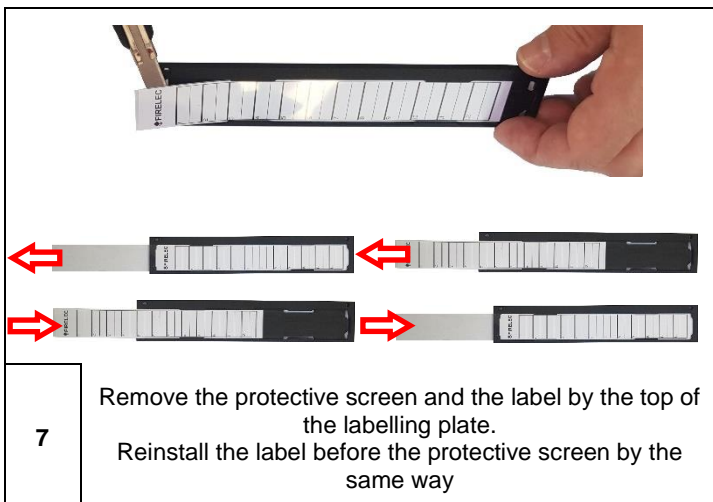
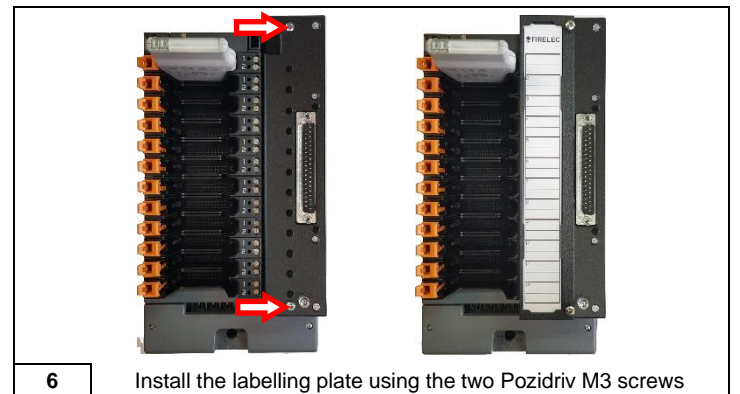
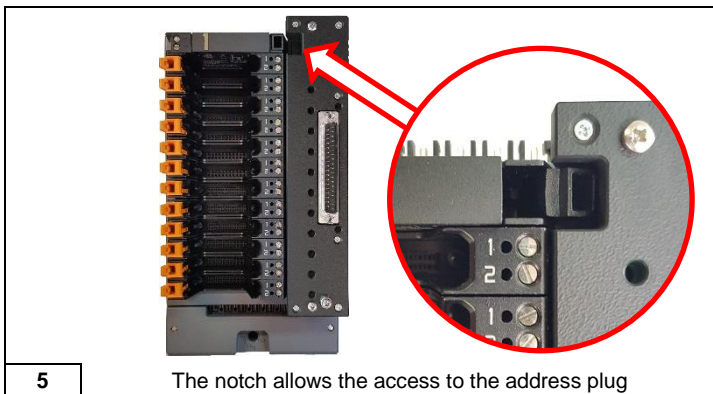
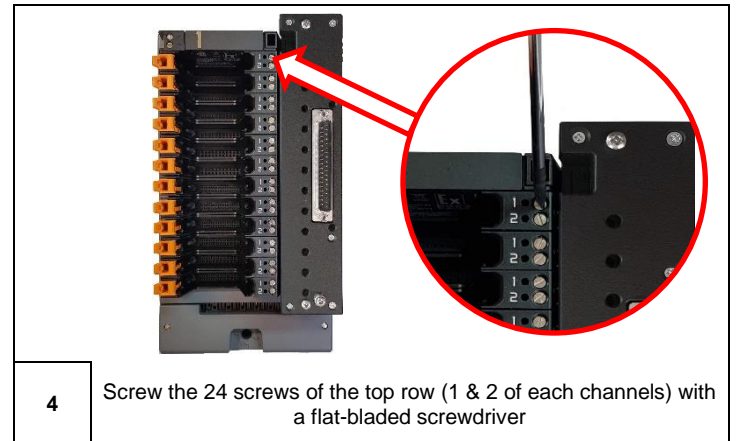
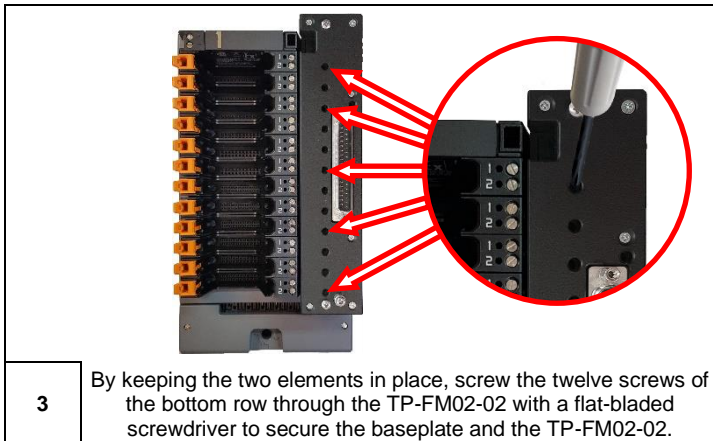
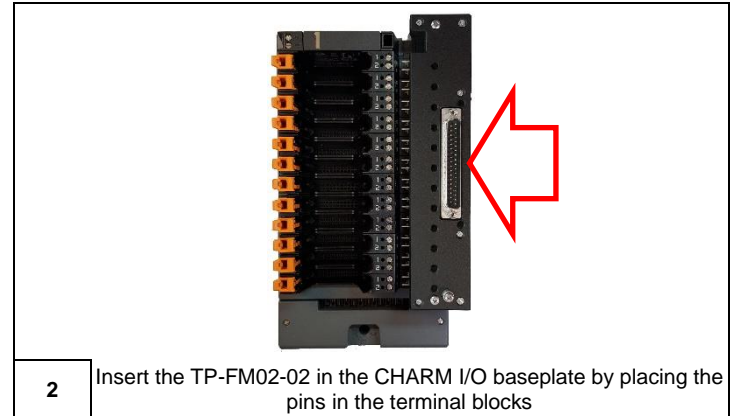
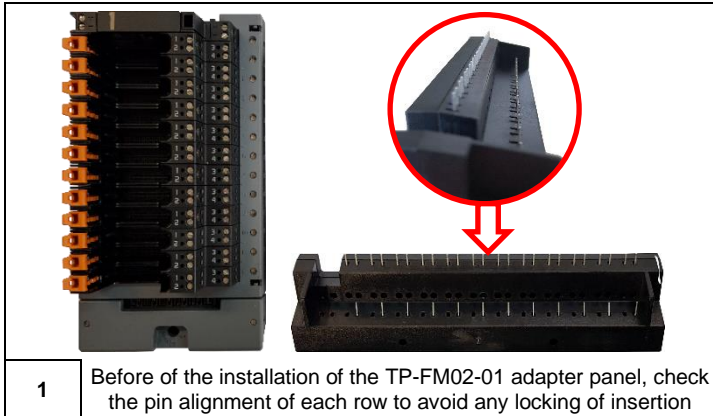
TP-FM02-02-1 + LB-11696-1

Pin Assignment :





	CH12				CH11				CH10				CH09				CH08				CH07				CH06				CH05				CH04				CH03				CH02				CH01				AM	
CHARM™	4	3	2	1	4	3	2	1	4	3	2	1	4	3	2	1	4	3	2	1	4	3	2	1	4	3	2	1	4	3	2	1	4	3	2	1	4	3	2	1	-	+								
SUB-D	17	NC	19	37	18	NC	36	35	14	NC	34	15	16	NC	33	32	11	NC	31	12	13	NC	30	29	07	NC	28	27	09	NC	08	26	06	NC	25	24	02	NC	05	23	03	NC	22	21	04	NC	20	01	NC	NC





Compatibility :

CODE	Signal	Signal description	CHARM TB	CHARM module	TP-FM02	Interfacing cable	FIRELEC FTA Reference
CM-AI02	AI	4-20mA (2W)	SE4501	SE4303T01	 TP-FM02-02-1	 CBL-1589 Option (-1)	 INT-AI12
CM-AI04	AI	4-20mA (3W with external power supply)	SE4501	SE4303T01	 TP-FM02-02-1	 CBL-1589 Option (-1)	 INT-AI12
CM-AI05	AI	4-20mA (4W)	SE4501	SE4303T01	 TP-FM02-02-1	 CBL-1589 Option (-1)	 INT-AI12
CM-RTD01	RTD	(2W /3W)	SE4501	SE4303T03	 TP-FM02-02-1	 CBL-1589 Option (-1)	 INT-AI12 (or INT-SUBD37M/363)

