

TP-FM02-09

CHARM™ I/O Baseplate adapter with 2 x BLT12 connectors

Description :

The **TP-FM02-09** adapter panel is used to connect a FIRELEC interface to the Emerson CHARM™ I/O baseplate (DeltaV™ S-series) using two BLT12 connectors.

The **TP-FM02-09** is screwed directly on the CHARM™ I/O baseplate.

The connection to the FIRELEC interface is done using two shielded cables, with a BLT12 pin female connector at one end, and labeled flying wires or a suitable connector matching with the FIRELEC interface at the other end.

Product options :

Option -1 : *TP-FM02-09-1*, Standard version

Option **VSH** : Conformal coating (Tropicalization)

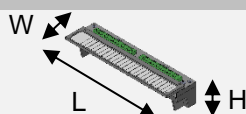
Technical Specifications :

Dimensions :

Length : 187 mm

Width : 43 mm (54 mm with ID label)

Height : 45 mm



Weight :

150 g (170 g with ID label)

Humidity :

Up to 90% (no condensation)

Temperature range :

Operating : -10°C to 70°C

Storage : -10°C to 70°C

Mounting on the CHARM I/O baseplate :

Secured by the 26 screws of the CHARM™ I/O Baseplate

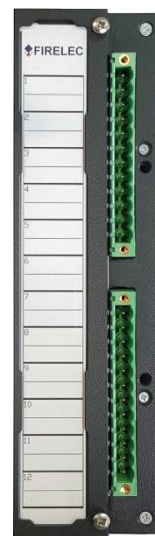
(Screw 1 and 2 for each of the 12 channels and the 2 address module screws)

Connection with the FIRELEC interface :

2 x BLT12 pin male connectors

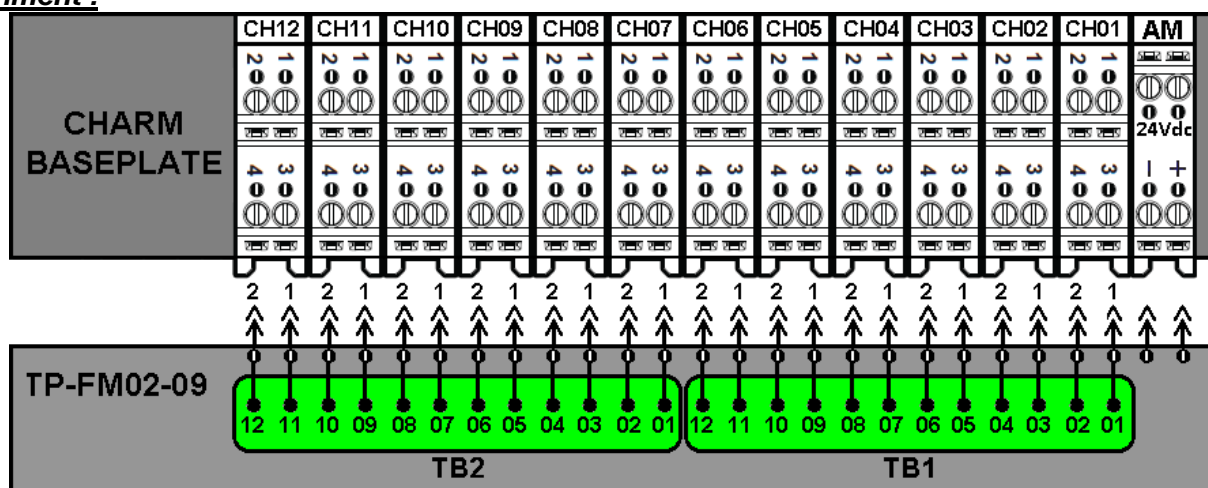


TP-FM02-09-1



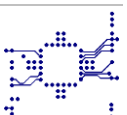
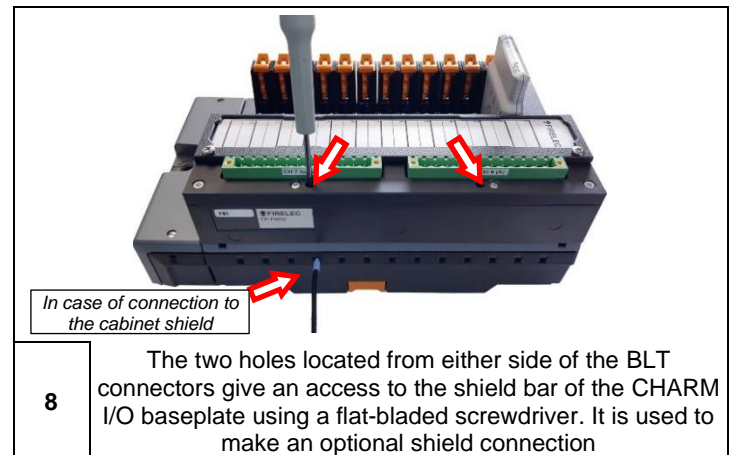
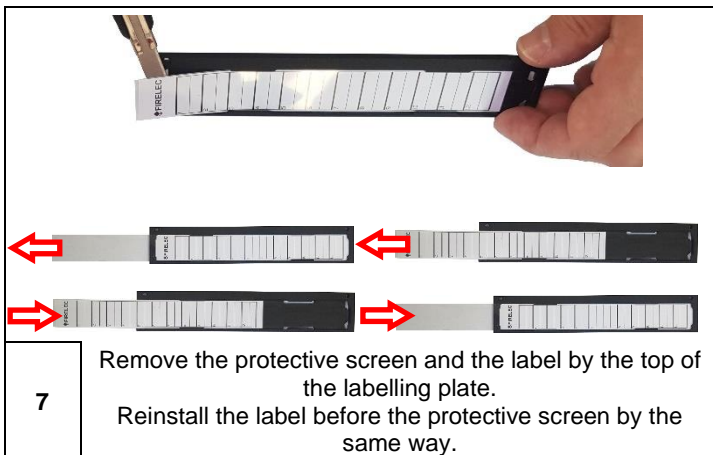
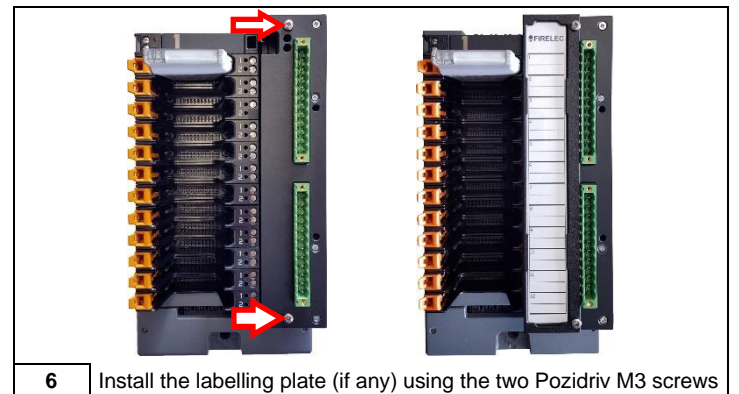
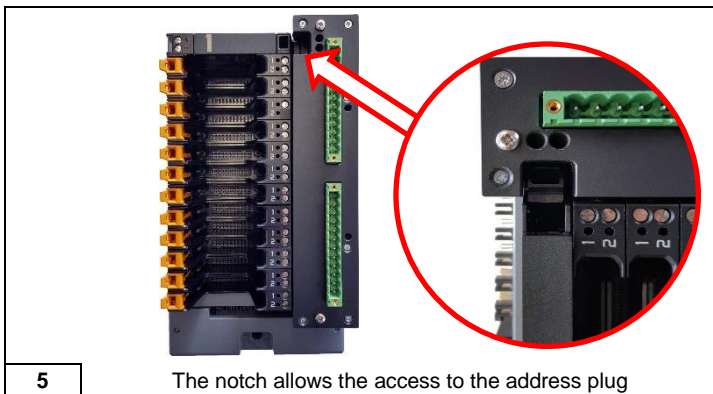
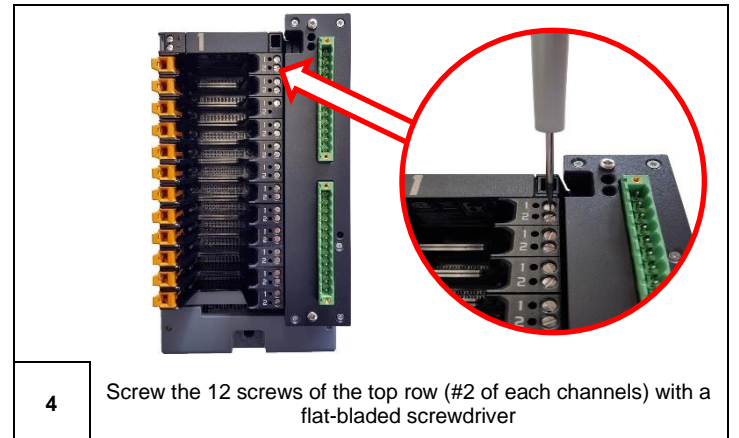
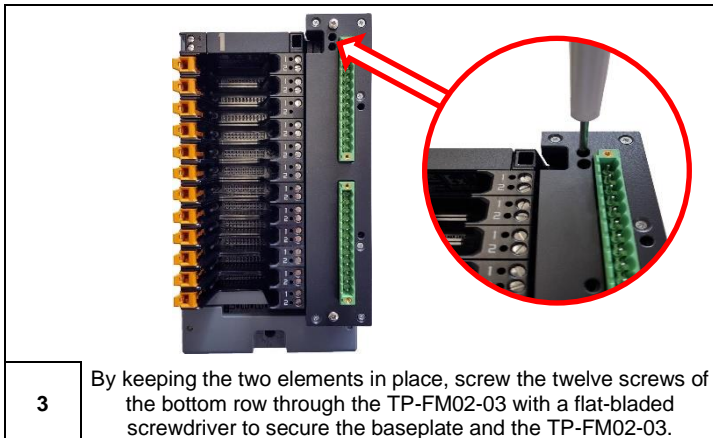
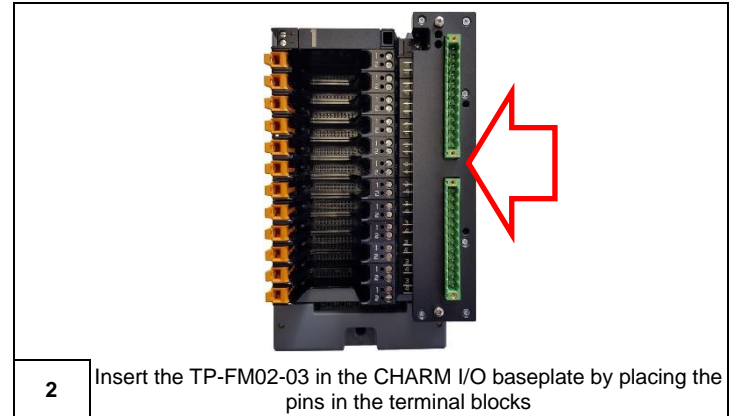
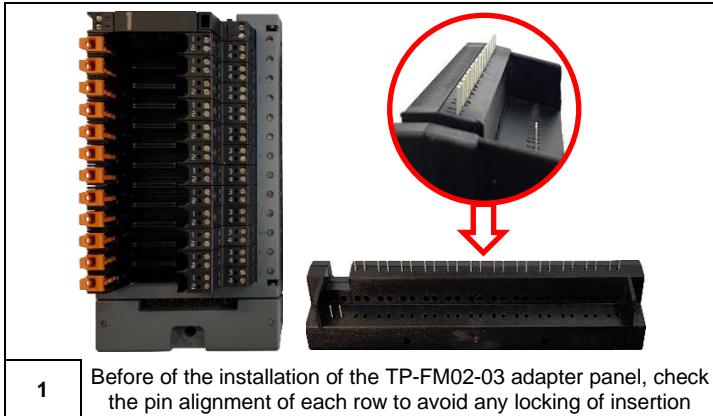
TP-FM02-09-1 + LB-11696-1
(To be ordered separately)

Pin Assignment :



	CH12		CH11		CH10		CH09		CH08		CH07		CH06		CH05		CH04		CH03		CH02		CH01		AM																									
	TB2 (second BLT12 for channels 07 to 12)												TB1 (first BLT12 for channels 01 to 06)																																					
CHARM™	4	3	2	1	4	3	2	1	4	3	2	1	4	3	2	1	4	3	2	1	4	3	2	1	4	3	2	1	-	+																				
BLT pin	NC	NC	12	11	NC	NC	10	09	NC	NC	08	07	NC	NC	06	05	NC	NC	04	03	NC	NC	02	01	NC	NC	12	11	NC	NC	10	09	NC	NC	08	07	NC	NC	06	05	NC	NC	04	03	NC	NC	02	01	NC	NC





Compatibility :

CODE	Signal	Signal description	CHARM TB	CHARM Module	TP-FM02	Interfacing cable	FIRELEC FTA Reference
CM-TC01	TC	TC All types	SE4504	SE4303T02	 TP-FM02-09-1	 2 x CBL-1587 <i>Option of the cable is depending of the Tc type</i>	 INT-2BLT12/242

